



LABOR SITUATION

Office of Research

Danté Bartolomeo, Commissioner

FOR IMMEDIATE RELEASE

October 2022 Data

CT Unemployment Rate = 4.3%

US Unemployment Rate = 3.7%

Connecticut's private sector continues to increase payrolls (+1,100) in October 2022

WETHERSFIELD, November 17, 2022 – Connecticut private sector payrolls increased 1,100 positions (0.1%) in October 2022 as the state's overall nonfarm employment grew by 500 jobs (0.03%) to a level of 1,668,200 last month (preliminary data, seasonally adjusted). Connecticut's nonfarm industry employment is now 36,600 (2.2%) positions above the October 2021 level. This is the tenth straight monthly nonfarm industry job gain in 2022. The Constitution State has now recovered 89.4% (258,600) of the 289,400 nonfarm positions lost during the 2020 COVID lockdown. The initially published September 2022 job gain of 4,400 (0.3%) was revised slightly lower by 100 positions to a still solid 4,300 monthly gain (0.3%). Connecticut's unemployment rate rose to 4.3% during the month from the 4.0% rate in September 2022. This release includes labor statistics received from two surveys prepared by the U.S. Bureau of Labor Statistics (BLS) in cooperation with the states.

"Private sector growth remained solid in October," said Patrick Flaherty, Director of the Office of Research at the Connecticut Department of Labor. "The industries hardest hit by the pandemic – Accommodation & Food Services and Health Care & Social Assistance – added the most jobs in October. Those with the largest October declines remain well above pre-pandemic levels."

Connecticut's private sector employment increased 1,100 jobs (0.1%) in October 2022 to 1,442,000 and is now higher by 35,800 positions (2.6%) from the October 2021 level. The state's private sector is 92.4% recovered from the April 2020 COVID employment loss trough. The **government supersector** was down last month, losing 600 jobs (-0.3%) to a level of 226,200. Total government employment in the state is just 800 positions (0.4%) above the year-ago levels and the public sector is now only 55.5% recovered from the COVID lockdown period. The government *supersector* in Connecticut includes all federal, state, local, and tribal government employment, including public education and Native American casino employment located on reservations.

Five of the ten major industry *supersectors* expanded employment, while four declined, and the Other Services *supersector* was unchanged in October 2022.

The five Connecticut industry *supersectors* that increased employment in October 2022 (including unchanged):

Increasing Sectors			
Industry Sector	Amount of Increase	Percent Change	October 2022 Employment
Leisure & Hospitality	+1,500	1.0%	150,600
Education & Health Services	+1,400	0.4%	341,500
Manufacturing	+800	0.5%	161,100
Information	+100	0.3%	30,900
Construction & Mining	+100	0.2%	63,400
Other Services	unchanged	0.0%	60,600

The four industry *supersectors* that lost in jobs in October 2022:

Decreasing Sectors			
Industry Sector	Amount of Decrease	Percent Change	October 2022 Employment
Professional & Business Services	-1,100	-0.5%	218,300
Trade, Transportation, & Utilities	-900	-0.3%	298,700
Financial Activities	-800	-0.7%	116,900
Government	-600	-0.3%	226,200

Connecticut Labor Market Areas (LMAs): Five of the six larger Connecticut **LMAs** that are seasonally adjusted by the BLS posted nonfarm employment gains in October 2022, while just one declined. The **Hartford LMA** (0.4%, 572,800) led in numerical job gains (+2,100) while the **Waterbury LMA** (0.9%, 66,400) led in monthly percentage gains - increasing 600 positions. The **Bridgeport-Stamford-Norwalk LMA** (0.4%, 399,000) added 1,700 jobs and the **New Haven LMA** (0.5%, 297,700) increased 1,600 payrolls. The **Danbury LMA** (0.3%, 76,400) also added 200 jobs, however, the **Norwich-New London-Westerly LMA** (-0.2%, 121,300) declined slightly by 200 positions.

Note: The six major Connecticut LMAs are independently estimated from the statewide data by the BLS and cover around 90% of the nonfarm employment in the state. Thus, estimates will not exactly sum to the statewide total.

Hours and Earnings: The October 2022 **private sector** workweek, *not seasonally adjusted*, averaged 34.1 hours, which is higher by two-tenths of an hour (0.6%) from the October 2021 estimate (33.9). Average hourly earnings at \$35.36, *not seasonally adjusted*, were up by \$1.18 (3.5%) from the October 2021 estimate of \$34.18. The resultant October 2022 private sector weekly wage averaged \$1,205.78, higher by \$47.08 from a year ago (4.1%, \$1,158.70). The Consumer Price Index for All Urban Consumers (CPI-U, U.S. City Average, *not seasonally adjusted*) in October 2022 was up 7.7% from a year ago. *Current all-employee private sector hours and earnings estimates can be volatile due to fluctuating sample responses.*

Labor Force Data (residential household survey)

The October 2022 unemployment rate for Connecticut was estimated by the BLS Local Area Unemployment Statistics program (LAUS) to be **4.3%** (seasonally adjusted). This is higher by three-tenths of a percentage point from the September 2022 level of 4.0%. The Connecticut unemployment rate was 5.4% in October 2021. The jobless rate was 3.4% in February 2020 (pre-COVID). The U.S. unemployment rate for October 2022 was 3.7%, up two-tenths of a percent from September 2022 but lower from the October 2021 jobless rate of 4.6%. The increase in the number of Connecticut's unemployed this month was considered statistically significant (4,500). The number unemployed has dropped by 19,500 in the past year. The labor force increased by 300 and is now up by more than 50,000 so far in 2022.

Unemployment claims for first-time filers (seasonally adjusted) in Connecticut were an average of 3,459 per week in October 2022, down by 711 (-17.1%) from the September 2022 (4,170) level and slightly lower by 13 (-0.4%) than the average weekly count of 3,472 in October 2021.

*The nonfarm employment estimate, derived from a survey of businesses, is a measure of jobs in the state; the unemployment rate and labor force estimates are based on a household survey, and measure the work status of people who live in Connecticut. Overall, as the national and state economies recover, volatility in monthly numbers can be expected. **Job and employment estimates are best understood in the context of their movement over several months rather than observed changes in a single month's value.***

Next Connecticut Labor Situation release: Thursday, December 15, 2022
(Preliminary November 2022 data)

Contact:
Communications, CT Department of Labor
CTDOL.SocialMedia@ct.gov

Labor Market Information is available at: www.ctworkforce.info
200 Folly Brook Boulevard, Wethersfield, CT 06109-1114 www.ct.gov/dol
An Equal Opportunity/Affirmative Action Employer

NONFARM EMPLOYMENT

Jobs - by Place of Work

CONNECTICUT AND THE UNITED STATES - Seasonally Adjusted

	October 2022 P	September 2022 R	August 2022	July 2022	October 2021	Over Month Change	Over Month Rate	Over Year Change	Over Year Rate
CONNECTICUT	1,668,200	1,667,700	1,663,400	1,661,000	1,631,600	500	0.0%	36,600	2.2%
Total Private	1,442,000	1,440,900	1,437,800	1,433,700	1,406,200	1,100	0.1%	35,800	2.5%
Goods Producing Industries									
Mining	500	500	500	500	500	0	0.0%	0	0.0%
Construction	62,900	62,800	61,700	61,000	60,800	100	0.2%	2,100	3.5%
Manufacturing	161,100	160,300	160,500	159,700	153,700	800	0.5%	7,400	4.8%
Durable Goods	125,000	124,300	124,600	124,000	120,000	700	0.6%	5,000	4.2%
Nondurable Goods	36,100	36,000	35,900	35,700	33,700	100	0.3%	2,400	7.1%
Service Providing Industries									
Trade, Transportation & Utilities	298,700	299,600	298,500	297,500	290,300	-900	-0.3%	8,400	2.9%
Wholesale	60,200	61,200	60,900	60,800	57,600	-1,000	-1.6%	2,600	4.5%
Retail	168,700	168,700	169,200	168,300	165,800	0	0.0%	2,900	1.7%
Transp, Warehousing & Utilities	69,800	69,700	68,400	68,400	66,900	100	0.1%	2,900	4.3%
Information	30,900	30,800	30,300	30,100	30,100	100	0.3%	800	2.7%
Financial Activities	116,900	117,700	118,400	118,600	117,100	-800	-0.7%	-200	-0.2%
Finance & Insurance	97,400	98,200	98,900	99,100	98,100	-800	-0.8%	-700	-0.7%
Real Estate, Rental & Leasing	19,500	19,500	19,500	19,500	19,000	0	0.0%	500	2.6%
Professional & Business Services	218,300	219,400	220,000	219,900	215,800	-1,100	-0.5%	2,500	1.2%
Prof, Scientific & Tech Services	99,200	98,600	98,900	97,600	97,600	600	0.6%	1,600	1.6%
Management of Companies	30,700	30,800	30,900	31,000	30,300	-100	-0.3%	400	1.3%
Admn & Support & Waste Mgt Serv	88,400	90,000	90,200	91,300	87,900	-1,600	-1.8%	500	0.6%
Educational & Health Services	341,500	340,100	339,200	338,100	336,200	1,400	0.4%	5,300	1.6%
Educational Services	68,700	68,600	69,200	68,200	65,500	100	0.1%	3,200	4.9%
Health Care & Social Assistance	272,800	271,500	270,000	269,900	270,700	1,300	0.5%	2,100	0.8%
Leisure and Hospitality	150,600	149,100	148,400	148,000	141,900	1,500	1.0%	8,700	6.1%
Arts, Entertainment & Recreation	25,700	25,600	24,500	25,000	24,500	100	0.4%	1,200	4.9%
Accommodation & Food Services	124,900	123,500	123,900	123,000	117,400	1,400	1.1%	7,500	6.4%
Other Services	60,600	60,600	60,300	60,300	59,800	0	0.0%	800	1.3%
Government**	226,200	226,800	225,600	227,300	225,400	-600	-0.3%	800	0.4%
UNITED STATES	153,308,000	153,047,000	152,732,000	152,440,000	148,005,000	261,000	0.2%	5,303,000	3.6%

LABOR MARKET AREAS (LMA)

Labor Market Area employment estimates are made independently of Statewide estimates.

Seasonally Adjusted data	October 2022 P	September 2022 R	August 2022	July 2022	October 2021	Over Month Change	Over Month Rate	Over Year Change	Over Year Rate
Bridgeport-Stamford-Norwalk	399,000	397,300	399,200	393,500	392,800	1,700	0.4%	6,200	1.6%
Danbury	76,400	76,200	76,000	75,500	74,900	200	0.3%	1,500	2.0%
Hartford	572,800	570,700	570,200	569,700	563,400	2,100	0.4%	9,400	1.7%
New Haven	297,700	296,100	294,000	293,600	289,700	1,600	0.5%	8,000	2.8%
Norwich-New London-Westerly, RI	121,300	121,500	120,900	120,100	119,200	-200	-0.2%	2,100	1.8%
Waterbury	66,400	65,800	66,200	65,800	65,000	600	0.9%	1,400	2.2%
<i>Not Seasonally Adjusted data (Non-Classified Areas, State estimated - not BLS)</i>									
Enfield	42,500	42,200	42,200	42,100	41,800	300	0.7%	700	1.7%
Torrington-Northwest	33,200	33,200	33,000	33,400	32,100	0	0.0%	1,100	3.4%
Danielson-Northeast	27,100	27,100	27,200	27,100	26,400	0	0.0%	700	2.7%

* Less than 0.05%

** Includes Native American tribal government employment

P = Preliminary

R = Revised

Starting with March, 2011, our monthly statewide and major LMA nonfarm job estimates have been taken over by the US Department of Labor Bureau of Labor Statistics. This is the final phase of transition in this program, which began in 2008. As a result of changes in the estimation procedures, you are likely to see more variability in month-to-month estimates of job counts. Caution should be used in interpreting any single month's estimate. The data are best interpreted to identify trends and cycles over several months and quarters. If you have any questions about these changes, please email us at: dol.lmi@ct.gov. Danbury and Waterbury LMA's are now back to being seasonally adjusted.

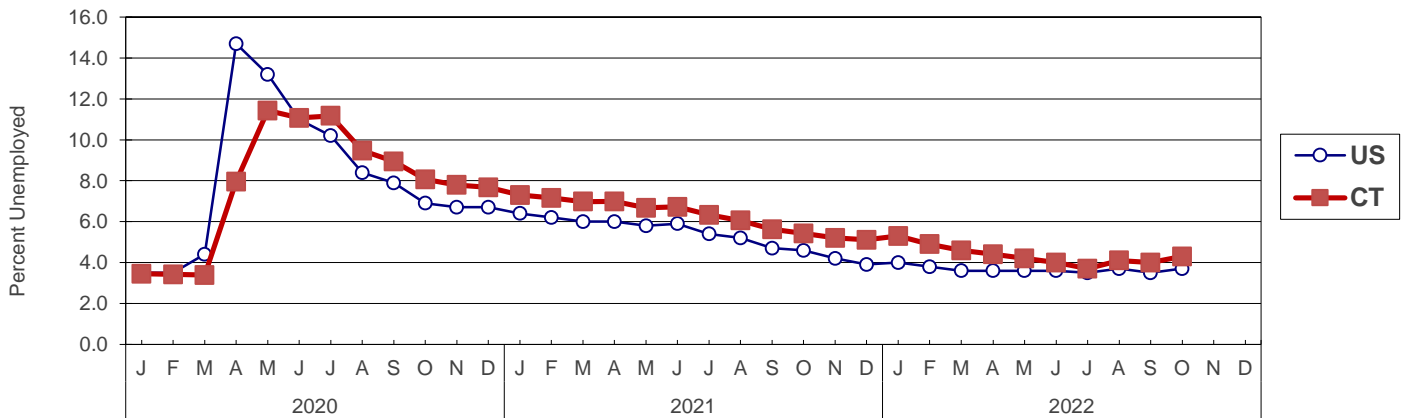
UNEMPLOYMENT

Persons Unemployed - by Place of Residence

CONNECTICUT AND THE UNITED STATES - Seasonally Adjusted

	Oct 2022 P		Oct 2021 R		Change		Sep 2022 R	
	Number	Rate	Number	Rate	Number	Points	Number	Rate
CONNECTICUT								
Unemployed	81,400	4.3	100,900	5.4	-19,500	-1.1	76,900	4.0
Labor Force	1,903,800		1,860,500		43,300		1,903,500	
UNITED STATES								
Unemployed	6,059,000	3.7	7,375,000	4.6	-1,316,000	-0.9	5,753,000	3.5
Labor Force	164,667,000		161,610,000		3,057,000		164,689,000	

U.S. AND CONNECTICUT UNEMPLOYMENT RATES - Seasonally Adjusted 2020 - 2022



LABOR MARKET AREAS - Not Seasonally Adjusted

	Oct 2022 P		Oct 2021 R		Change		Sep 2022 R	
	Number	Rate	Number	Rate	Number	Points	Number	Rate
Bridgeport-Stamford	19,100	4.1	23,700	5.2	-4,600	-1.1	18,800	4.0
Danbury	3,500	3.3	4,400	4.2	-900	-0.9	3,500	3.3
Danielson-Northeast*	1,600	3.7	2,000	4.7	-400	-1.0	1,600	3.7
Worcester NECTA	1,500	3.8	1,900	4.8	-400	-1.0	1,500	3.7
Hampton	100	3.1	100	3.7	0	-0.6	100	2.7
Enfield	1,800	3.6	2,200	4.5	-400	-0.9	1,800	3.6
Hartford	24,100	3.9	31,000	5.1	-6,900	-1.2	23,900	3.8
New Haven	12,600	3.7	15,800	4.8	-3,200	-1.1	12,400	3.7
Norwich-New London	5,800	4.2	7,500	5.5	-1,700	-1.3	5,700	4.1
Torrington-Northwest**	1,600	3.5	2,000	4.4	-400	-0.9	1,700	3.5
Torrington NECTA	1,100	4.2	1,400	5.3	-300	-1.1	1,100	4.1
Litchfield	600	2.7	700	3.2	-100	-0.5	600	2.7
Waterbury	5,600	5.0	6,900	6.4	-1,300	-1.4	5,500	4.9
CONNECTICUT	75,200	4.0	94,900	5.1	-19,700	-1.1	74,100	3.9
UNITED STATES	5,609,000	3.4	6,896,000	4.3	-1,287,000	-0.9	5,460,000	3.3

P = Preliminary

R = Revised

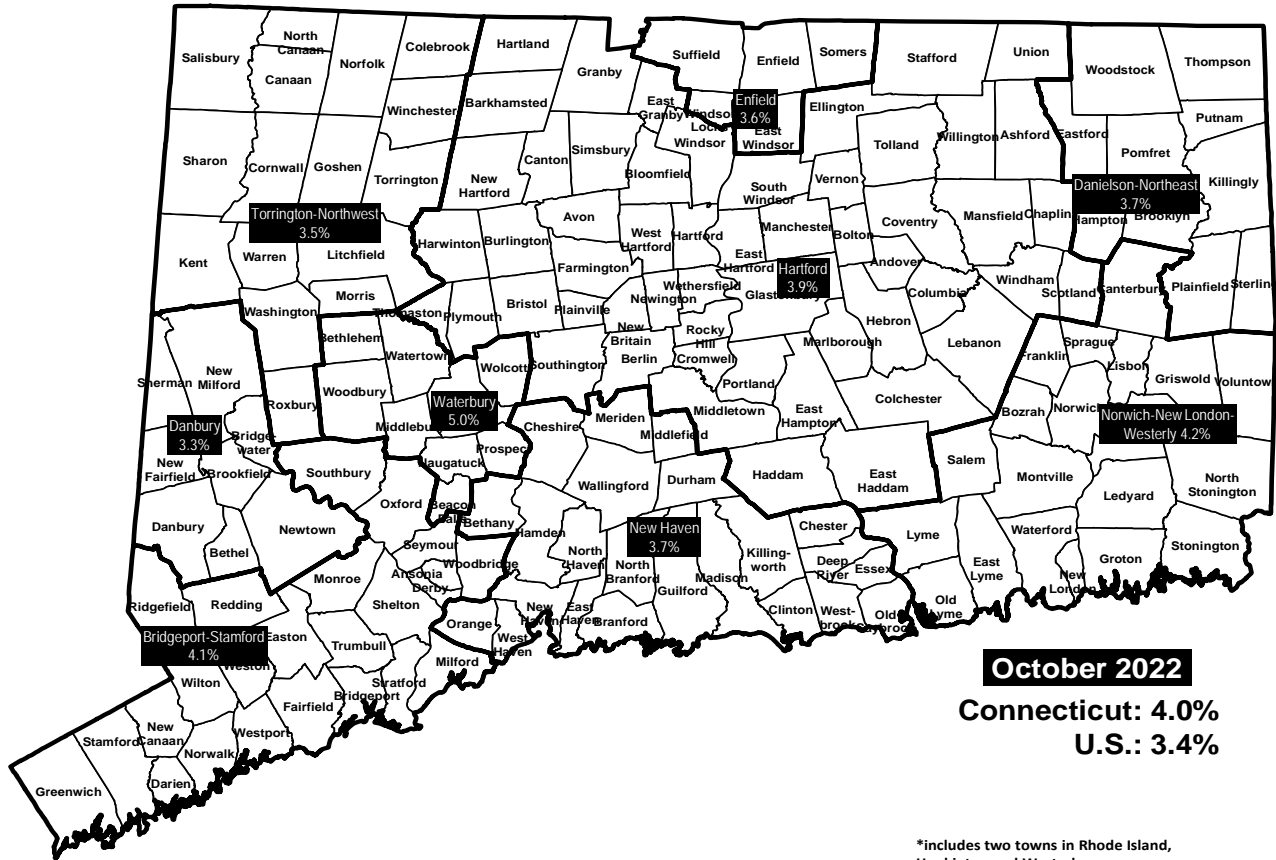
Labor force data included in this publication are developed in cooperation with the U.S. Department of Labor, Bureau of Labor Statistics.

* Worcester NECTA, CT part and Hampton LMA are combined ** Torrington Micropolitan NECTA and Litchfield LMA are combined

UNEMPLOYMENT RATES

Not Seasonally Adjusted

LABOR MARKET AREAS



*includes two towns in Rhode Island, Hopkinton and Westerly.

HOURS AND EARNINGS

CONNECTICUT Statewide - Not Seasonally Adjusted

	Average Weekly Earnings				Average Weekly Hours				Average Hourly Earnings			
	Oct. 2022 P	Oct. 2021	Change over Yr.	Sep. 2022 R	Oct. 2022 P	Oct. 2021	Change over Yr.	Sep. 2022 R	Oct. 2022 P	Oct. 2021	Change over Yr.	Sep. 2022 R
Private Industry All Employees	\$1,205.78	\$1,158.70	\$47.08	\$1,185.37	34.1	33.9	0.2	33.8	\$35.36	\$34.18	\$1.18	\$35.07
Manufacturing* Production Workers	\$1,148.00	\$1,102.82	\$45.18	\$1,153.33	41.0	38.9	2.1	41.0	\$28.00	\$28.35	-\$0.35	\$28.13

* Production worker data have been impacted by the loss of a large, high-paying manufacturer from the monthly sample.

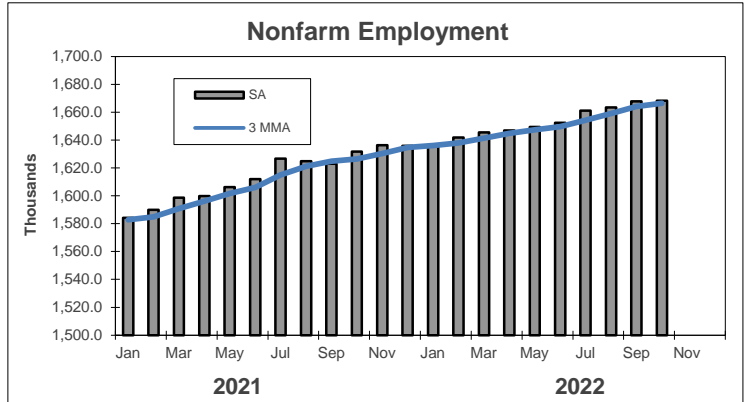
P = Preliminary R = Revised

Hours and earnings are also developed for the state's major industry sectors and Labor Market Areas. They can be found on our website at: www1.ctdol.state.ct.us/lmi

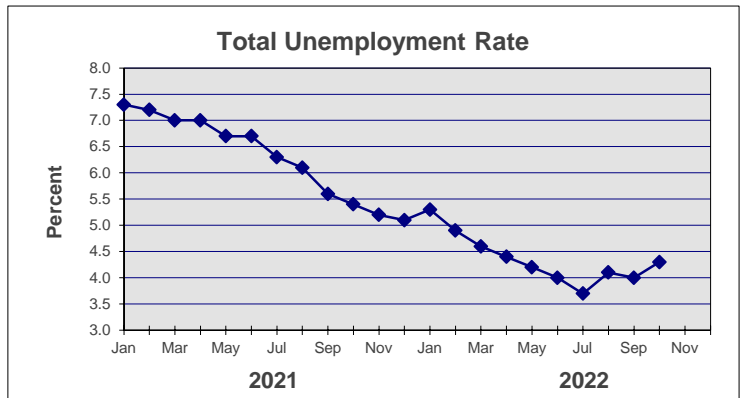
TRENDS

Seasonally Adjusted

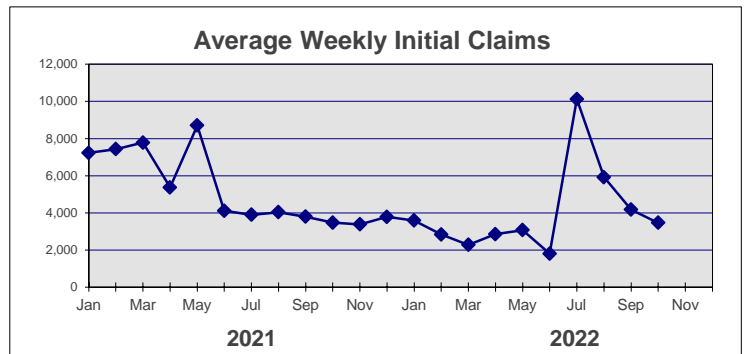
	Nonfarm Employment (000s)	Total Unemployment Rate
2021		
Jan	1,584.1	7.3
Feb	1,590.0	7.2
Mar	1,598.7	7.0
Apr	1,599.8	7.0
May	1,606.3	6.7
Jun	1,612.0	6.7
Jul	1,626.6	6.3
Aug	1,624.7	6.1
Sep	1,622.9	5.6
Oct	1,631.6	5.4
Nov	1,636.3	5.2
Dec	1,635.8	5.1



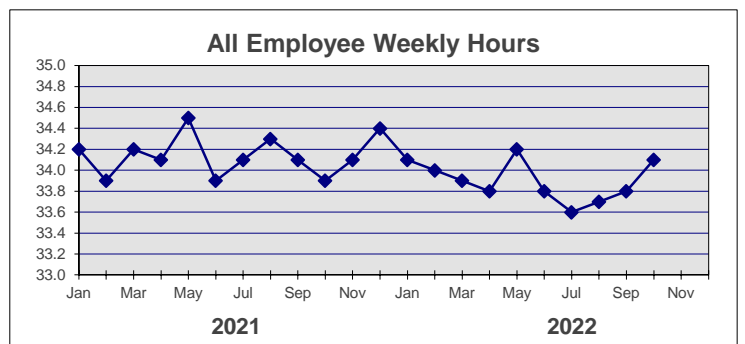
2022		
Jan	1,636.4	5.3
Feb	1,641.8	4.9
Mar	1,645.5	4.6
Apr	1,646.9	4.4
May	1,649.3	4.2
Jun	1,652.3	4.0
Jul	1,661.0	3.7
Aug	1,663.4	4.1
Sep	1,667.7 R	4.0 R
Oct	1,668.2 P	4.3 P
Nov		
Dec		



	Avg Weekly Initial Claims	All Employee Weekly Hours*
2021		
Jan	7,226	34.2
Feb	7,431	33.9
Mar	7,780	34.2
Apr	5,366	34.1
May	8,702	34.5
Jun	4,109	33.9
Jul	3,892	34.1
Aug	4,031	34.3
Sep	3,789	34.1
Oct	3,472	33.9
Nov	3,376	34.1
Dec	3,780	34.4



2022		
Jan	3,585	34.1
Feb	2,837	34.0
Mar	2,275	33.9
Apr	2,848	33.8
May	3,066	34.2
Jun	1,800	33.8
Jul	10,124	33.6
Aug	5,915	33.7
Sep	4,170	33.8 R
Oct	3,459	34.1 P
Nov		
Dec		



* Not seasonally adjusted

P = Preliminary

R = Revised

** Labor-management dispute